

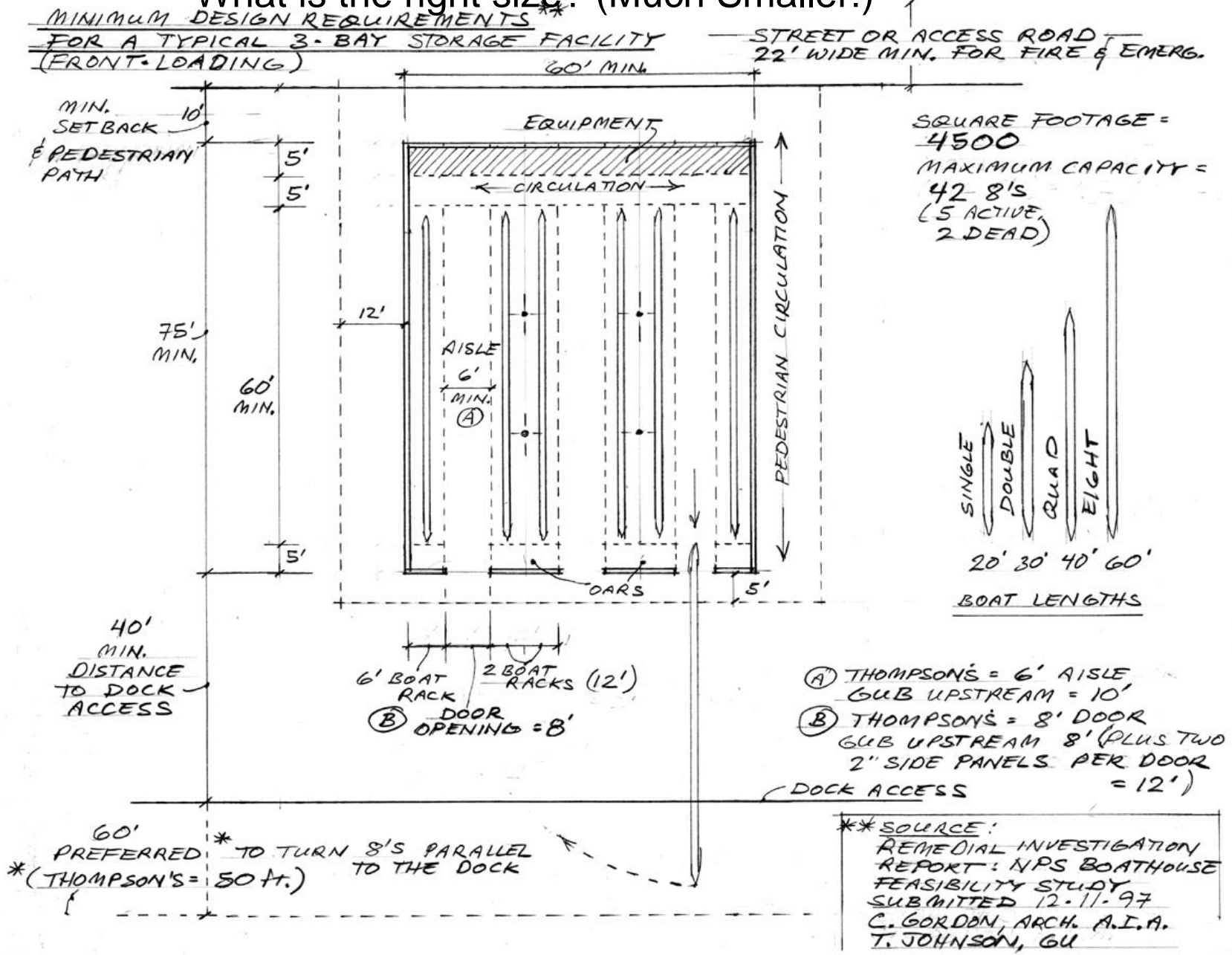
# GU BOATHOUSE ALTERNATIVES



This “McBloathouse” is unacceptable in the C&O CANAL NHP!!

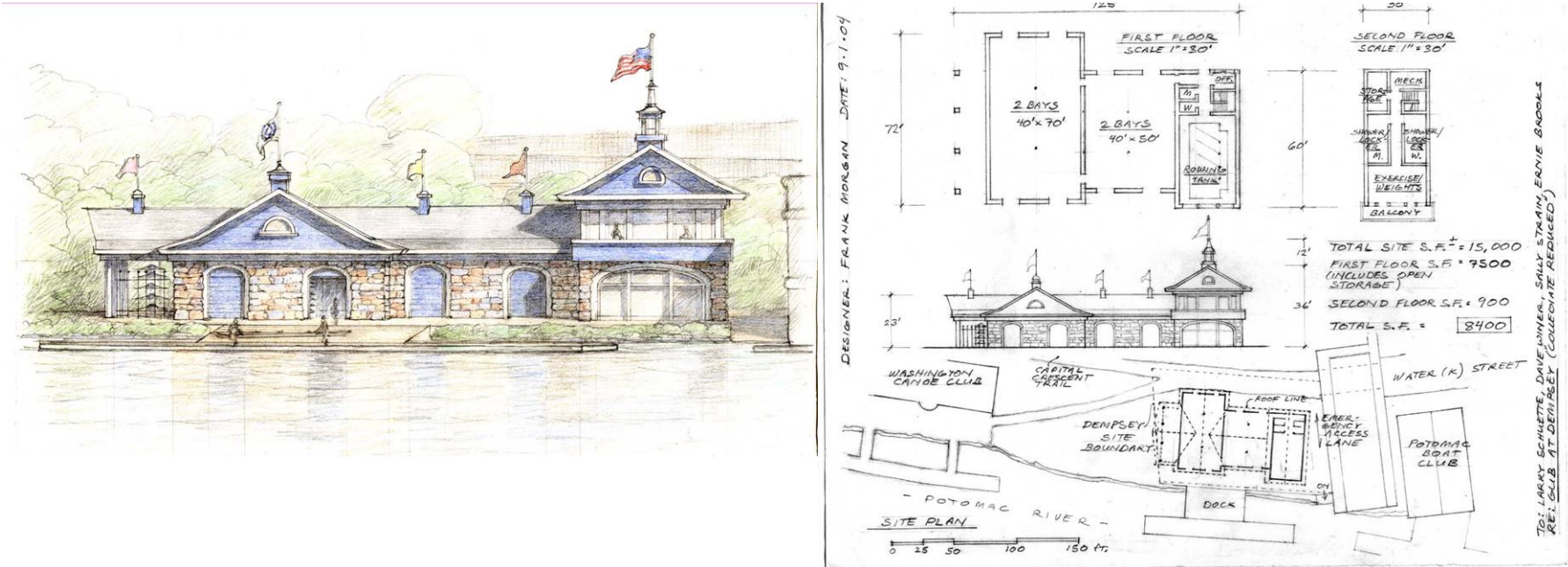
[www.savethecanal.org](http://www.savethecanal.org)

# What is the right size? (Much Smaller!)



As determined by GU Coach Tony Johnson: 4500 SQ holds 42 "8"s!

# The Dempsey Alternative Better Location, Excellent Size



On the site of the Historic Dempsey Boathouse, between WCC and PBC

7500 SF Footprint

Room for 28 "8"s, 28 other boats

Main roofline is the same height as WCC (doesn't block the views)

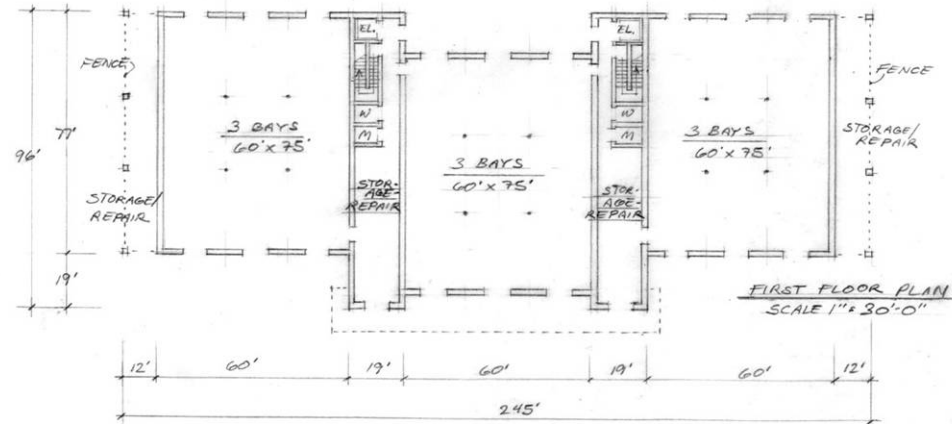
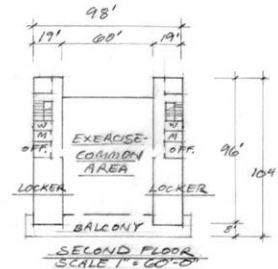
# At 34<sup>th</sup> Street: The Georgetown Universal Boathouse Space for 144 "8"s Could house GU, GWU and the High School Crews!



DATE: 12-18-04  
TO: LARRY SCHUETTE  
FROM: FRANK MORGAN  
RE: GUB AT 34TH ST.

FIRST FLOOR S.F. = 13,500  
SECOND FLOOR S.F. = 4,000  
BUILDING TOTAL = 17,500 S.F.

APPROXIMATE LOT TOTAL = 35,000 S.F.



Just above 34<sup>th</sup> Street

13, 500 SF Footprint (only 72% of the GU Boathouse)  
Has 9 full length bays, Room for 144 "8"s! (WOW!)